



500 Bed ICU Facility by Buildtec



COMPANY BROCHURE



ALTERNATIVE BUILDING SOLUTIONS





The Barricks by Buildtec

buildtec

DESIGN | SUPPLY | INSTALL | MAINTAIN



Buildtec, with 12 years of experience in South Africa's alternative building industry, offers innovative solutions for new build and refurbishment sectors. They work with property owners, facility managers, architects, quantity surveyors, and landlords, providing design freedom, cost efficiency, sustainability, and distinctive individuality. With a strong ISO compliant management system, Buildtec aims to establish an international brand over the next decade, focusing on customer service, process engineering, and health and safety.

Buildtec offers the following competencies:

- Metal Roofing & Cladding
- Architectural Cladding & Facades
- Fire Protection

High End Homes
Ceiling & Partitions
Green Technologies

Tum-Key Refurbishment
Flooring & Finishes
Waterproofing Solutions

*Buildtec is proudly
associated with quality
and attention to detail.*

*Buildtec has skilled staff
with real solutions.*





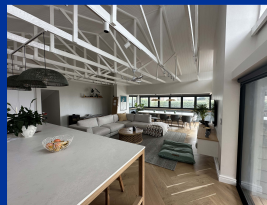
buildtec

1144 Harbourtown by Buildtec

HIGH END HOMES USING ALTERNATIVE BUILDING SOLUTIONS

The high-end housing sector has become our core business due to Light Steel frames being incredibly dynamic. Making changes to design on site easier with less cost to the client/builder and site programme predictability.

A comparison between conventional building methods and Light Steel framing is virtually indistinguishable due to the system having sharper lines and a far superior finishing quality.

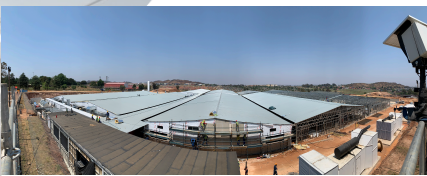


BENEFITS OF LIGHT STEEL

A number of benefits are highlighted below:

- High productivity with factory standards of accuracy
- Cost savings & value for money
- Assembled in-factory and delivered to site, ready to use
- The frame has a zinc alloy coating which is self healing does not rust
- Dynamic and are fully engineered
- Precision engineered ensuring every wall is in perfect alignment
- Higher R-Value & energy efficient
- Can be built with minimal site-disturbance
- Reduce wet trades on site
- 100% impervious to termite, white ant and borer attack

500 Bed ICU Facility at Chris Hani Baragwanath Hospital by Buildtec



Chemcity Warehouse by Buildtec



CLINICS & HOSPITALS USING ALTERNATIVE BUILDING SOLUTIONS

Lightweight steel framing offers speed, erection reduction, and weather-resistant construction, reducing program time by up to 30% compared to traditional brick and mortar. Insulated walls improve energy and acoustic efficiency.

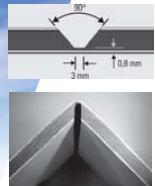
Buildtec utilizes Australian design software for precision and efficiency in building design, engineering, detailing, production management, and machine control. Independent engineers test the software against manually designed frames to ensure it aligns with Design Statements and System Design Manuals.



WAREHOUSING USING ALTERNATIVE BUILDING SOLUTIONS

Steel offers numerous benefits over other building materials, including resistance to shrinkage, warping, rot, infestation, and moisture absorption. Its lightweight nature allows for easy design revisions and site program predictability, and its prefabricated frames minimize wastage in manufacturing.

Nutech High-Density and Medium Density sheets provide considerable scope for design flexibility and creative expression. The range includes Nutech Vermont Plank or Tongue & Groove that is available in a plain or realistic wood grain finish and is suitable for use in a variety of applications.



ALUMINIUM COMPOSITE MATERIAL FACADE SYSTEMS

The façade material is distinguished by its outstanding product attributes such as precise flatness, variety of surfaces and colours as well as excellent formability.

The rear-ventilated construction technique is suitable for creating façades on both new and existing buildings as well as roof constructions and interior applications.



MULTICELLULAR FACADE SYSTEMS

Architectural thermally efficient multicellular polycarbonate daylight facade systems offer a different aesthetic whilst still providing a high thermal, acoustic and fire performance.



Fully waterproof connection system



Excellent resistance to hail



Complete UV protection



Excellent warranty protection



Flexible design options



Recyclable

buildtec FACADE SYSTEMS

Cape Town, Johannesburg & Durban

SHIPLAP FIBRE CEMENT FACADE

Nutec High-Density and Medium Density sheets provide considerable scope for design flexibility and creative expression.

The range includes Nutec Vermont Plank or Tongue & Groove that is available in a plain or realistic wood grain finish.



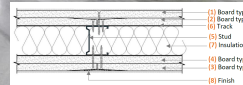
CONCEALED FIX CLADDING FACADES

Concealed Fix cladding systems roll-formed in steel, aluminium or zincalume. Cladding providing a traditional aesthetic Ventilated aluminium cassette façade systems.





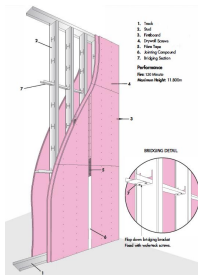
Plumbago Segregation Wall by Buildtec



EXTRA HEIGHT DRYWALL PARTITION SYSTEM

The 1 hour and 2 hour fire rated partition walling systems with heights up to 14m high!

- Panels up to 14m high
- 1 hour or 2 hour fire rated
- SANS 10177-2: 2005 Fire resistance test
- 150mm wide stud and track
- Unlimited lengths or building widths
- Quick and clean installation
- Spray coat applied for quality finish & speed
- Lightweight so no strengthening of foundations



PARTITION SYSTEMS

Gyproc's wall systems go beyond just partitioning with its designed high-performance solutions that enhance thermal comfort, sound absorption and fire resistance. For busy commercial spaces or quiet residential homes, our lightweight, durable systems offer versatility and sustainability.

- Fire rated
- Sound performance
- Impact resistant
- Quality
- Speed of Erection
- International



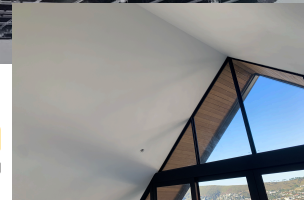
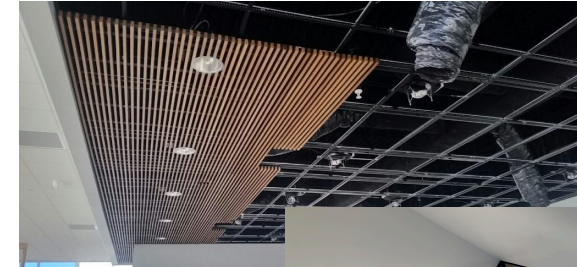
CEILING & PARTITION SYSTEMS



CEILING SYSTEMS

Direct fix ceiling systems using light steel bracing gridwork to the existing structure with 9mm Gypsum, 12mm Gypsum, 12mm Firestop Gypsum, 15mm Firestop gypsum (1hour FR) or 2x15mm Firestop gypsum (2hour FR). Joints treated with compound, sanded smooth & entire ceiling skimmed with 3mm skimming plaster. Ceiling edging finished off with plaster trim edging against walling system.

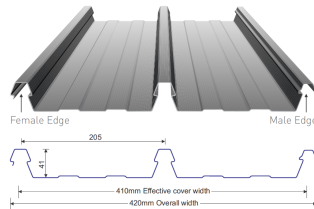
Suspended ceiling grid suspension hanger system using T37 primary tee sections at 1200mm centres with cut tee sections in between to concrete soffit or steel purlins. We offer an array of different tile options catering for every project requirements - Vinyl, acoustic, fire rated, etc. Our suppliers include OWAAM Gyproc etc.



METAL ROOFING SYSTEMS

- Concealed fix roof profiles such as Diamondek, Kliplok & Saflok. Concealed-fix roofing, also referred to as secret fix, is designed for very low pitched roofs. Cips under the sheet hold down the sheeting & the sheet is not punctured with fasteners, and remains completely watertight even at a very low slope.

SAFLOK 700
concealed fix roofing



NEWLOK
standing seam roofing

- Pierced Fix roof profile such as IBR, Corrugated & Widedeck profiles. The Corrugated 'S' profile is sinusoidal and can be used as roofing and cladding material with its origins dating back to the Victorian era. IBR 'box profile' is an abbreviation for Inverted Box Rib, an angular trapezoidal fluted profile sheet with a bold appearance which makes it both attractive and practical.

TUFDEK **IBR**



classi**corr**



- Core metals such as zincalume Z150 & Z200 and Z275 galv materials.
- Acoustic absorption / rain drumming reduction and thermally efficient roof systems.

buildtec



ALUCLIP UNITIZED ALUMINIUM SYSTEMS

The system was developed for the alternative building industry due to the different wall thicknesses and the modular requirements maintaining build speeds. Aluclip can be used on conventional structures for housing, residential walk-ups, commercial buildings, facades, retirement villages, schools & temporary Classrooms, etc .

Aluclip windows and door systems allows for the complete unit to be manufactured in a factory (controlled environment) including glazing & ironmongery. The unitized system is manufactured in 2 parts namely the external ratchet frame and the inner glazed frame which are delivered in one unit but detached for installation. The assemblies are clipped together on either side of the building opening. The system can cater for a variety of different wall thicknesses by varying the ratchet frame.

The product's biggest advantage is the speed of installation with a reduction in programme. Prefabricated in a factory ensuring all the material arrives to site assembled with factory standards of accuracy, 100% correct & ready for erection. The concept ensures minimal wastage in manufacture.

Benefits of Aluclip:

- Modular and assembled off site in a controlled factory environment
- The system can cater for a variety of different structure wall thicknesses.
- Delivered complete including glazing & ironmongery.
- Window or door openings do not need to be plastered or finished before installation due to the permanent reveals & seals.
- Aluclip can offer all window and door types including:
 - Sashes, sliding frames with inter-locks, fixed panels, etc.
 - Sliding doors, Stacking doors, Hinged doors, etc.
- Less damage and waste during shipment or other transport due to packing methods.
- Proudly South African and manufactured in Cape Town. Aluclip systems delivered country wide.
- Our Shopfront Systems can incorporate our 28mm, 38mm and 45mm Casement sash inserts.



ALUCLIP **buildtec**

THANK YOU FOR CONSIDERING BUILDTEC..

